

The logo for Clay Terrace Apartment Homes features the name "Clay Terrace" in a large, dark serif font, with "Apartment Homes" in a smaller, sans-serif font below it. To the right of the text is a circular icon containing a stylized flame or leaf design.

Clay Terrace

Apartment Homes



A New Attitude In Living

Expand Your Horizons

Experience comfortable apartment living and relaxation without sacrificing the conveniences and features of high-end urban living. Enjoy a vibrant community with neighbors who exemplify the values of Kansas City's culture and our remarkable quality of life. Our residents are happy to call Clay Terrace home.

Apartment Features

- Distinctive, Open Floor Plans
- Spacious Bedrooms
- Large Closets & Walk-in Closets with Organizers
- Full-size Washer/Dryer Connections
- Full Equipped Kitchens
- Carpet & Vinyl Flooring
- Individually Controlled Central Air & Heating
- Window Coverings
- ADA Accessible First Floor Apartment Homes
- Private Locked Storage
- Private Patio or Balcony
- High-speed Internet & Cable Ready

Community Amenities

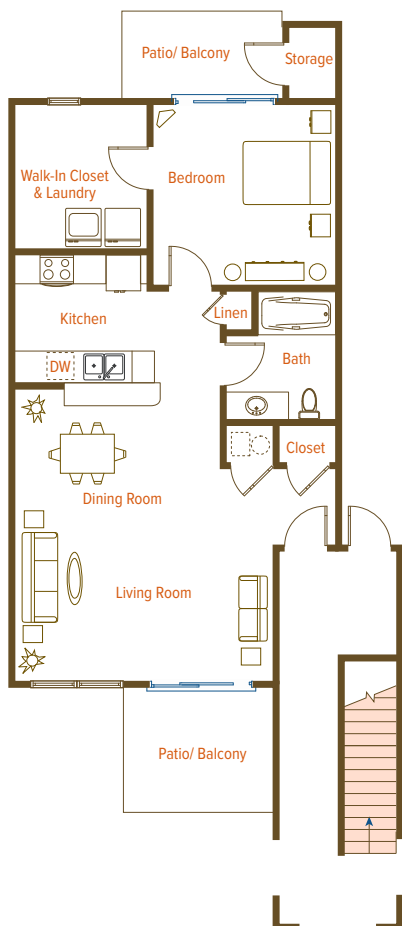
- Refreshing Swimming Pool with Sundeck
- Pet Friendly
- Clubroom Lounge with Full Service Kitchen
- Playground
- Clothes Care Laundry Facility
- Garages & Carports Available
- Beautiful, Mature Landscaping
- Convenient Access to Major Highways
- Easy Access to Shopping, Restaurants & Entertainment
- Approximately 20 minutes to downtown Kansas City via I-35
- Professional On-site Management & Maintenance Teams
- 24-Hour Emergency Maintenance



Stylish, Spacious Interiors

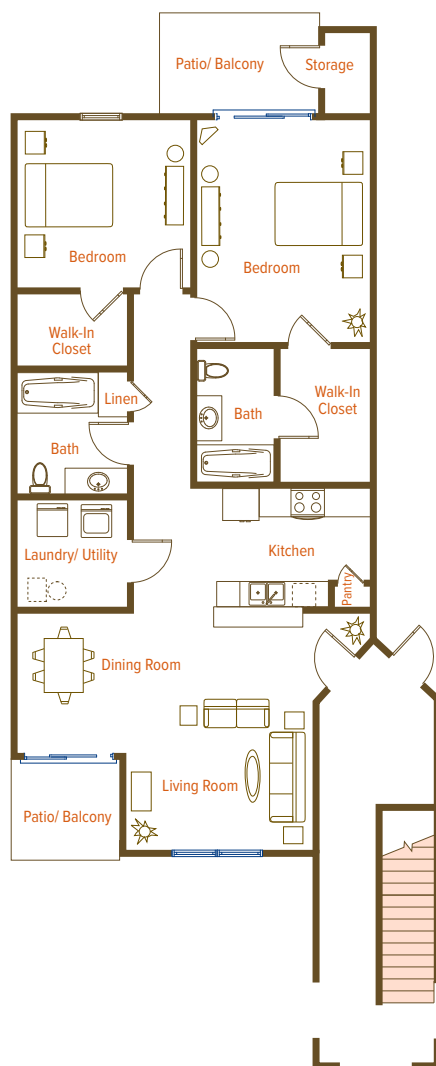
One Bed | One Bath

744 sq.ft.



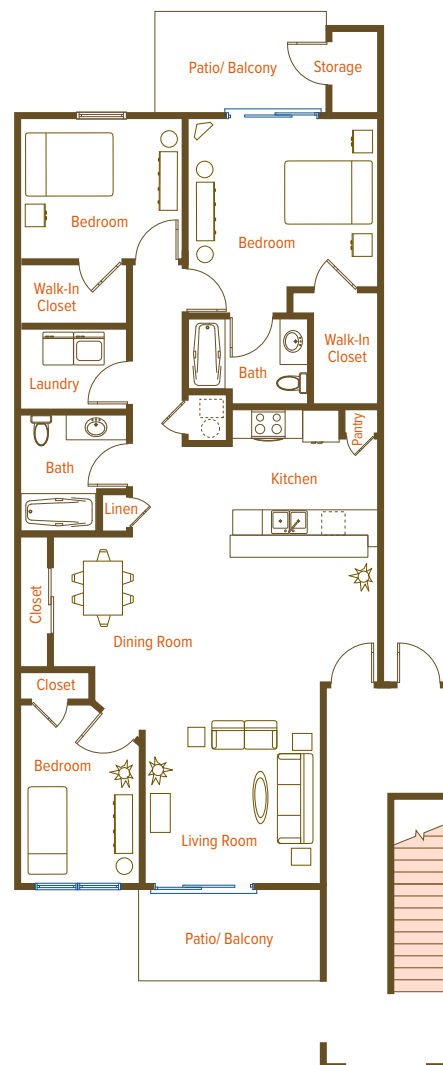
Two Bed | Two Bath

1076 sq.ft.



Three Bed | Two Bath

1283 sq.ft.



Proudly managed by



Welcome to a premium residential experience inspired by value, convenience and executed with practical simplicity.